



EXETER LIVESTOCK CENTRE

MARKET REPORT

March 2025

Monday 24th March – Prime Stock Market



EXETER LIVESTOCK CENTRE

01392 251261

livestock@kivells.com

www.kivells.com



SOUTH DEVON HERD BOOK SOCIETY'S

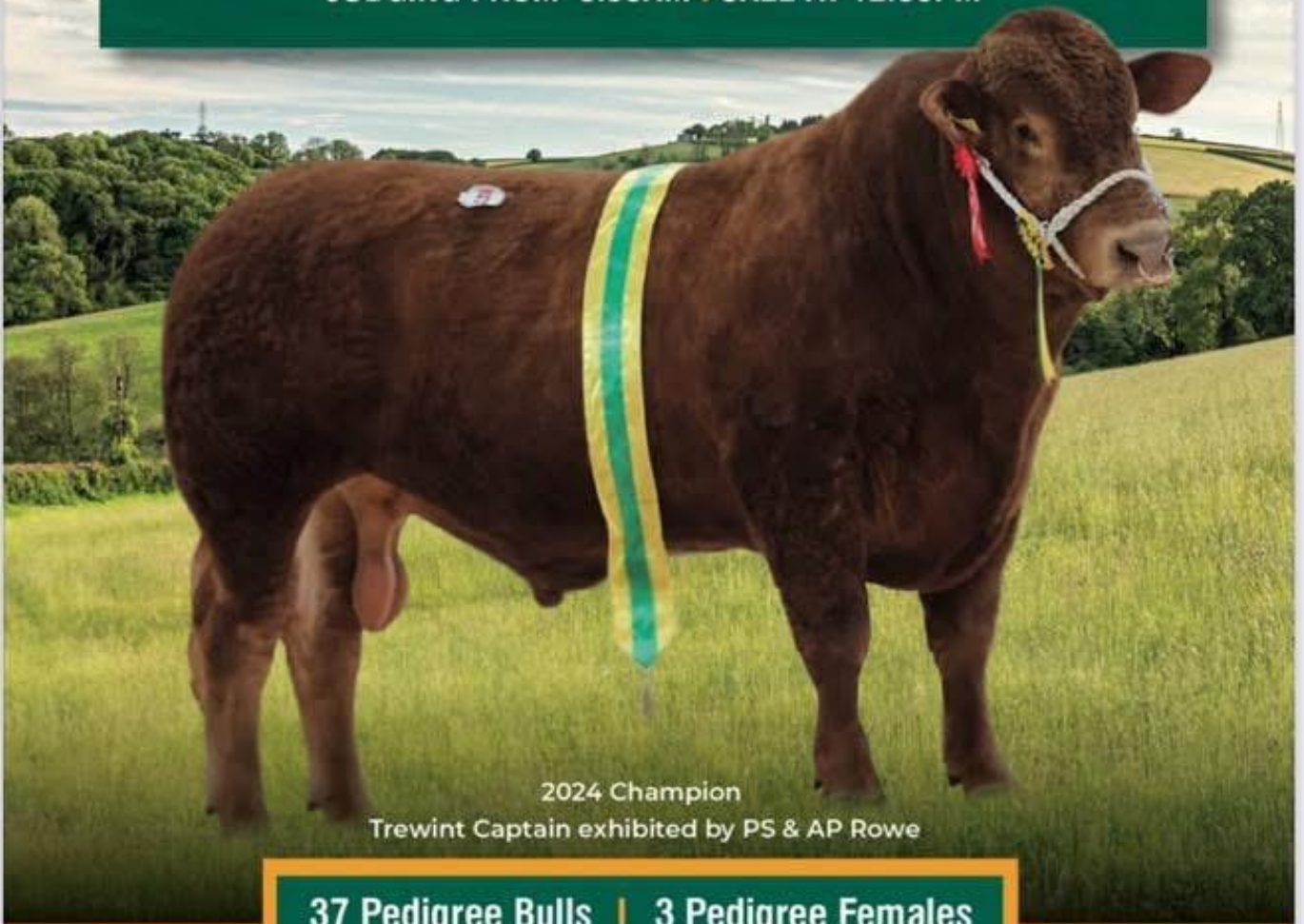
SPRING SHOW & SALE 2025

EXETER LIVESTOCK CENTRE, MATFORD, EXETER, EX2 8FD

Sale by Auction under NBA Terms & Conditions of Sale

WEDNESDAY 9TH APRIL 2025

JUDGING FROM 8.30AM | SALE AT 12.30PM



2024 Champion

Trewint Captain exhibited by PS & AP Rowe

37 Pedigree Bulls | 3 Pedigree Females

All TB tested and either CHeCs accredited free of BVD or individually tested negative for BVD antigen, and all vaccinated for BVD at least one month prior to Sale date.

SINGLE STEP BREEDPLAN EBVs incorporating genomics

Monday 24th March

27 PRIME CATTLE & CULL COWS – 10:45 AM

Auctioneer: Simon Alford – 07789 980203

Prime Cattle to 406ppk and £2598 Cull Cows to 298ppk and £2268

The 400ppk mark was reached for the second week running in the prime cattle section here at Exeter on Monday when a smart, powerful 598kg red Limousin heifer (24m) from Adrian and Bradley Bowden of Drewsteignton came back at a considerable 406ppk and £2424 followed by a steer of the same calibre and breed (22m) from the Bowden's which ran to £2517 (660kg x 382ppk). Older (32m) South Devon steers from Steve Harris, Littlehempston returned £2598 (770kg x 338ppk) and £2595 (760kg x 342ppk) whilst other thirty month prime saw a nicely covered Simmental heifer (34m) from Kathleen and Lewis Slade of Widecombe in the Moor realise £1923 (660kg x 292ppk). Cull cows very much wanted this week and a brisk trade when topping out at a massive 298ppk for an eye catching British Blonde cow from Adrian and Bradley Bowden which at 688kg grossed £2046. Top price realised in that section was £2268 (902kg x 252ppk) given for a hefty Simmental cow from MR and KM Pring of Broadclyst whilst a couple of grand Salers barreners from Russell Boundy and Family down from Winkleigh also broke the £2000 barrier when selling for £2209 (868kg x 255ppk) and £2145 (802kg x 268ppk). South Devon cows sold readily and to £1663 (834kg x 200ppk) for David and Shirley Mudge of Hexworthy with further native breed sorts selling at £1613 (652kg x 248ppk) for a stout Devon from Brian Coward in from Bridestowe.



Penbode
Farm Vets

- Competitively priced farm medicines
- Dairy and beef fertility clubs
- 24/7/365 veterinary cover
- Livestock fertility testing and advice
- VetTech services
- In-house labs and lambing bays

www.penbodevets.co.uk
Holsworthy | Bradworthy | Stratton | Launceston | Camelford

KIVELLS

Established 1885

www.kivells.com



FODDER FOR SALE BY PRIVATE TREATY



X180 Round Bale Haylage

1st cut, chopped, made well suitable for sheep and cattle, good access. Located at Cheriton Fitzpaine

X100 Round Bale Organic Silage

1st cut, white and red clover mix. Located at Feniton

For further information or entries for the above please contact Exeter Livestock Centre
Call: 01392 251 261 or Sam Hutchings on 07553 307293

Spring Lambs to £194 & 495ppk

Prime Hogs to £195 & 363ppk

Cull Ewes to £365 & Rams to £285

Mega Monday's are back again in Exeter with getting towards 5000 sheep seeing great demand in all sections.

860 PRIME SPRING LAMBS

The 860 springers were a phenomenal trade, particularly the under 42kgs, with the SQQ of 441ppk up some 72p on the week and incidentally 5p in front of the corresponding week last year. The best handyweights touching £5 per kilo with Tom Yandle of Oxtan selling 38kgs at £188 & £184.50 or 495 & 486ppk, as well as 39's at £189 & £187.50, 40kgs at £189 and heavier 48kgs at £193. £193 also for smart 41's from the Williams family of Southleigh and £190.50 for the same weight from Geoff & Liz Hosegood of Eats Worlington. Top money of the day went to a shapely pen of 44kg lambs from the Partridge family of Broadclyst that sailed to £194 with the Williams family also making £193 of their 42's. Heavier lambs seeing a bit more life today but with the lift in the handyweights some still realising £20 less than their lightweight counterparts. Best overweights at £187 for 53kg pure Charollais from Ben & Amelia Watts of Ashburton as 47kg lambs sold to £185 & £184 again from Tom Yandle. Take note of these averages please, overweights average £177, 45-52's average £170, 40-44's are £11 more at £181 and the under 40kg lambs averaged £180.50!!

Some extra interest today for the festivities at the end of this week, so trade not guaranteed to be just as hot next Monday, but one certainty is that the best of the trade will continue to be for the lighter lambs.

1887 PRIME HOGGS & 21 MATURE SHEEP

More hogs than we thought at 1908 and trade no less, some hogs in fact £5-£8 dearer than last week with a slight lift in the meated heavy weight trade. Overweights to £195 for Phil Hopkins of Offwell, £191 for Andy O'Brien of Whimple, £190 for Mark & Clare Davis of Burlescombe and £189 for John Reddaway and sons of Cossick Cross. 52kg hogs to £168 again from Phil Hopkins as 51's sold to £165 and the same price for smart 49kgs from RJ Nancekivell of Brendon and Messrs Cathcart of Broadhembury sold 50kgs at £164. 46's to £156.50 again for RJ Nancekivell and £155 for both Ross Edwards of Stockwood and SH Peters of Talaton. Best of the 44's to £152.50 for Martin & Rus Gillbard of Morchard Bishop as 43's sold to £149 for Merv Down of Abbots Kerswell who also had 41's at £144 but top price per kilo today went to smart 40kg Millenium Blue hogs from the Baxter family of Exwick which rose to £145 or 363ppk. 39's to £139 for Fred Janes of Moretonhampstead and £138 for Martin and Russ Gillbard as James Shinner of Buckfastleigh sold 38kg Jacob hogs at £135. More toothers coming through now with 21 today and if proper meat they're not de-valued very much at all with Russell Stevens of Crediton selling 52kgs at £156 or £3 per kilo.

SPRING LAMBS					
Weight	No.	Top £'s	Top ppk	Av £'s	Av ppk
32-39	159	189.00 (+34.00)	495 (+95)	180.49 (+34.61)	467 (+84)
40-45	548	194.00 (+30.00)	473 (+63)	180.99 (+25.54)	434 (+68)
46-52	143	193.00 (+23.00)	402 (+51)	170.47 (+11.63)	358 (+27)
52+	10	187.00 (+13.00)	353 (+42)	176.90 (+9.57)	320 (+29)
PRIME HOGGS					
25-32	10	99.00 (-9.00)	309 (-29)	82.40 (-0.11)	275 (-5)
33-39	115	139.00 (+2.00)	356 (-14)	115.35 (-7.80)	307 (-24)
40-45	535	153.00 (-4.00)	363 (-11)	139.80 (-0.07)	326 (+5)
46-52	740	168.00 (+3.50)	340 (~)	152.86 (+2.32)	315 (+8)
53+	487	195.00 (+12.00)	321 (+6)	163.76 (+2.33)	285 (+4)
Mature Sheep	21	169.00 (+38.00)	300 (+33)	127.33 (+12.83)	244 (-2)
		Top		Average	
EWES	1936	£365 (+39.00)		£159.10 (-6.98)	
RAMS	42	£285 (-7.00)		£143.31 (-30.55)	

*** VAN or Farm Assurance NOW A MUST FOR ALL SPRING LAMB PRODUCERS please with all major firms requiring one or the other. Without it you are severely disadvantaged!****

1936 CULL EWES & 42 RAMS

We asked and you delivered! Nearly 2000 cull sheep forward and sold and selling to a very similar trade to last week despite nearly twice the number present. With all major ewe firms in the country now represented, buyers were keen especially for meat and weight, although some over fat ewes perhaps meeting more resistance today. The centre record was equalled when Russell Stevens of Crediton sold a single Texel ewe at £365 and another pair at £299 as Phil Bond and family of Blackawton realised £335 of his pick and £297 of the rest of the pen. Michael Lear of Loxbeare sold 4 at £332 and another 6 at £288 and the Quick family of Crediton sold six at £325 and another pen of Texel's made £288 for Ross Edwards and Gemma travelling down from Stockwood. Bragging rights in the Charollais breed went to Tom Newth of Castle Cary with a single at £320 and others at £262 & £258 whilst Ben and Amelia Watts sold six well at £289. Jill Handley of Sampford Courtenay sold a Texel cross ewe at £258 and Tom & Steve Hammett of Broadclyst had more crossbred ewes at £248 and no less than six vendors sold pens of ewes at £240. Best Mules up into the early £180's for a few heaviest types including a pen of 21 from Martin Barons and family of Diptford selling at £175 with half meat sorts often either side of £150 and plain and lightweight sorts £90 to £120 and hill ewes keenly sought after too with the best often £110 to £120 with the next draw down £75 to £95. Tups not quite the power today but still strong demand with Michael Vooght and family of Hennock achieving £285 of a Charollais ahead of C & D Ford of Chulmleigh at £240 and Tom & Leh Cole of Heasley Mill at £235 and Paul Vanstone of Bratton Clovelly at £228 & £200. Overall average of £159 on the 1936 ewes is back just £7 on last week's flyer with a lot more forward today and perhaps a lot more lighter and leaner sorts on parade this week. With the break of Ramadan at the end of this week, numbers will need monitoring please for next Monday, please feel free to give either Sam or myself a call.

**** Prime and cull sheep must not be found to be lame or in-lamb, any farmers found breaking these rules may trigger a Trading Standards or APHA on farm inspection.****

IMPORTANT NOTICE TO ALL SHEEP VENDORS:

- **Please ensure all sheep are tagged in the approved (EID) manner before arrival at the livestock market and checked before you leave.**
- **Please ensure all VAN numbers are available when booking in your sheep, VAN numbers are only valid for 12 months from date of issue, ensure yours is up-to-date.**
- **Please complete the market entry form as well as the sheep licence making sure you have completed the number of sheep you have bought to market.**

Thank You for your Co-operation

Pause for a moment
Understand how *YOU* are
How your best friend *IS*
How those around you *ARE*

LEN'S



LIGHT

24TH-30TH
MARCH
2025

The Big Farm Tea Break

Take the time to *STOP*,
pop the kettle on, make a phone call
and *catch up*.

If you need to, reach out
www.lenslight.co.uk/reachout



FORTHCOMING SALES

MONDAY 24TH MARCH – EXETER LIVESTOCK CENTRE

Weekly Prime Stock Market

FRIDAY 28TH MARCH – EXETER LIVESTOCK CENTRE

Weekly Store Stock Market to inc Monthly Sale of Organic Cattle & Sheep, Sale of Dairy Cattle and Fortnightly Pig Sale

MONDAY 31ST MARCH – EXETER LIVESTOCK CENTRE

Weekly Prime Stock Market

FRIDAY 4TH APRIL – EXETER LIVESTOCK CENTRE

Weekly Store Stock Market to inc Centurion Sheep Breeders Sale of Dorset Ewes and Rams

MONDAY 7TH APRIL – EXETER LIVESTOCK CENTRE

Weekly Prime Stock Market

WEDNESDAY 9TH APRIL – EXETER LIVESTOCK CENTRE

Spring Sale of Cattle on behalf of the South Devon Herd Book Society

FRIDAY 11TH APRIL – EXETER LIVESTOCK CENTRE

Weekly Store Stock Market to inc “Heart of Devon” 13th Anniversary – 3rd Spring Sale of Continental & Continental X Store Cattle, Special Show & Sale of Charolais Bulls and Females, Sale of Dairy Cattle including English Gold Top Sale of Jerseys, Show & Sale of Suckled Calves, Show and Sale of Ewes and Lambs and Fortnightly Pig Sale

MONDAY 14TH APRIL – EXETER LIVESTOCK CENTRE

Weekly Prime Stock Market to inc Easter Show & Sale of Spring Lambs

WEDNESDAY 16TH APRIL – EXETER LIVESTOCK CENTRE

Devon YFC Show & Sale

FRIDAY 18TH APRIL – EXETER LIVESTOCK CENTRE

GOOD FRIDAY – NO MARKET

MONDAY 21ST APRIL – EXETER LIVESTOCK CENTRE

Weekly Prime Stock Market

TUESDAY 18TH MARCH – EXETER LIVESTOCK CENTRE

Sale of TB Restricted, Cull, Prime and Store Cattle

FRIDAY 25TH APRIL – EXETER LIVESTOCK CENTRE

Weekly Store Stock Market to inc Monthly Sale of Organic Cattle & Sheep, Month Catalogued Sale of Beef Breeding Stock and Fortnightly Pig Sale

EXETER LIVESTOCK CENTRE

01392 251261

livestock@kivells.com

www.kivells.com

Farms | Land | Smallholdings

Thinking of selling?

Kivells are at the heart of the farming community throughout the westcountry and beyond and have been selling farms, land and smallholdings since 1885.



Our tailor made service includes;

- ✓ Personal and confidential service
- ✓ Experienced team of Farm Agents
- ✓ Tailor made marketing plans across a variety of platforms
- ✓ Network of contacts within the farming community
- ✓ Added value with advice on Tax, Planning and Stewardship



In-house
bespoke
brochures



Over 40,000
followers on
Social Media



Millions of
page views on
kivells.com,
Rightmove
& Zoopa



Coverage in
national and
regional
publications

With 140 years of industry experience, we pride ourselves in providing friendly and professional advice on all aspects of selling your farm, land or smallholding.

Farms For Sale

KIVELLS

www.kivells.com

Blagdon Manor Farm North Tamerton, Holsworthy

Privately set residential and livestock farm on the Devon/Cornwall border.

- Just under 200 acres of ring fenced land
- Imposing four/five bedroom Grade II listed farmhouse and two bedroom bungalow (subject to Agricultural Occupancy Condition)
- Extensive range of modern livestock buildings, plus some more traditional stone barns with potential, subject to planning
- Equestrian appeal with stabling, all weather track and sand school/turnout areas
- Huge appeal with enormous potential to diversify

Guide Price: £2,500,000

Holsworthy Farms & Land Department
farms@kivells.com | 01409 259547



Farms For Sale

KIVELLS

www.kivells.com

Tregonhaye Farm Kergilliack, Falmouth

Beautifully positioned stock farm, within easy reach of Falmouth, Helford Passage and the South Coast.

- Substantial and well appointed six bedroom farmhouse
- Useful range of adaptable buildings
- 85½ acres of private ring-fenced land
- Superb views
- EPC G

Guide Price: £2,000,000

Holworthy Farms & Land Department
farms@kivells.com | 01409 259547



Farms For Sale

KIVELLS

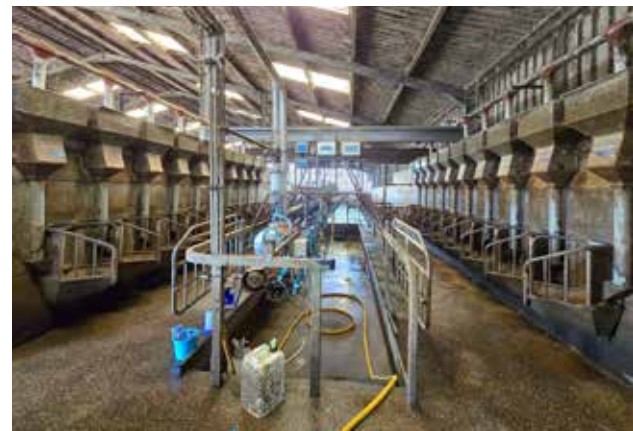
www.kivells.com

Dairy Unit and Land at Melbury Parkham, Bideford

- Ring fenced modern dairy unit
- 127 cubicles
- 10/20 swing over parlour
- Youngstock building
- Just under 50 acres

Guide Price: £800,000

Holworthy Farms & Land Department
farms@kivells.com | 01409 259547



Farms For Sale

KIVELLS

www.kivells.com

West Burrow Farm Bratton Clovelly, Okehampton

A quietly set rural small holding offering huge potential.

- Grade II* Listed thatched farmhouse in need of modernisation.
- 3 beds, 2 receptions.
- Two adjoining traditional barns.
- Land and woodland

Guide Price: £750,000

Holsworthy Farms & Land Department
farms@kivells.com | 01409 259547



Farms For Sale

KIVELLS

www.kivells.com

Landabethick Farm Blisland, Bodmin

Available as a whole or in 2 lots

- Five/six bedroom (one en suite) detached house, three reception rooms and conservatory
- Splendid private location
- Located on the fringe of the wide expanses of Bodmin Moor, close to the sought-after moorland village of Blisland
- Barns ripe for conversion
- Access to the Camel Trail for walking and cycling only 0.5 miles distant
- In all 77.11 acres of agricultural land and ancient woodland

LOT 1 - House, buildings and 54.83 acres.
Guide Price: £1,450,000

LOT 2 - Approximately 22.28 acres of ancient woodland.
Guide Price: £150,000

As a whole: £1,600,000

Liskeard Farms & Land Department
mark.bunt@kivells.com | 01579 345543



Farms For Sale

KIVELLS

www.kivells.com

Fern Hill Farm Mount, Bodmin

- Farm with significant development potential
- Range of agricultural and equestrian buildings
- 60.29 acres of land including productive pasture
- Two bedroom lodge
- Planning for farm dwelling and residential caravan
- Located in a super rural location with far reaching valley views
- Freehold with vacant possession upon completion

Guide Price: £1,200,000

Liskeard Farms & Land Department
mark.bunt@kivells.com | 01579 345543



Farms For Sale

KIVELLS

www.kivells.com

Tregaminion Manor Farm Morvah, Pendeen, Penzance

- Idyllic coastal setting
- Ring fenced farm in an Area of Outstanding Natural Beauty
- Multiple dwellings for income generation or multi-generational living
- Period farmhouse and two cottages
- Range of modern and traditional farm buildings
- Development opportunities with some planning consent in place
- In all some 118 acres
- EPC C, G & G.

Guide Price: £2,500,000

Holsworthy Farms & Land Department
farms@kivells.com | 01409 259547



Farms For Sale

KIVELLS

www.kivells.com

Higher Norley Farm Northlew, Okehampton

- Just over 93 acres of productive pasture land
- A useful range of farm buildings including 96 cubicles, loose housing, fodder store and workshop
- Wonderful far reaching views to Dartmoor
- For sale by Private Treaty.

Guide Price: £1,100,000

Holsworthy Farms & Land Department
farms@kivells.com | 01409 259547



Development Site **For Sale**

KIVELLS

www.kivells.com

Development Site at Lower Newton Farm Zeal Monachorum, CREDITON, Devon

- Valuable residential development opportunity
- Range of agricultural buildings with planning permission for demolition and creation of three new build, detached four and three bedroom dwellings
- Potential under extension of Permitted Development Rights for retention and conversion of the existing buildings (Clarkson's Law – Maximum 10 dwellings), subject to planning
- Additional land available

Guide Price: £450,000

Exeter Farms & Land Department
simon.alford@kivells.com | 01392 252262



Aerial view looking north west

Land For Sale

KIVELLS

www.kivells.com

Land at Yollaberry

Hatherleigh | Guide Price £120,000 - £140,000



Just over 9¾ acres of gently sloping pasture land in a stunning location with parish road frontage and lane access.

Holsworthy Farms & Land Agency
Farms@kivells.com | 01409 259547

Land at Stoke Canon

Exeter, Devon | Offers in Excess of £375,000



A highly productive run of level arable and pastureland with livestock handling pens extending to just under 46 acres.

Exeter Farms & Land Department
simon.alford@kivells.com | 01392 252262

Land at Hole Farm (Lot 1)

Ashwater, Beaworthy | Guide Price £620,000



Approx. 57.58 acres of well farmed productive grassland. Mainly level/gently sloping and extremely well fenced.

Holsworthy Farms & Land Agency
Farms@kivells.com | 01409 259547

Land at Polzeath

Wadebridge, Cornwall | Guide Price £995,000



Just over 15 acres of prime farmland in a stunning location with long term development potential, subject to planning.

Holsworthy Farms & Land Department
farms@kivells.com | 01409 259547

Land at Pipswell Cross

Morwenstow, Bude | Guide Price £290,000



Just under 35 acres of productive pasture and arable ground in a sought after farming area with road frontage and access and far-reaching views as far as Lundy Island.

Holsworthy Farms & Land Agency
Farms@kivells.com | 01409 259547

Land for Auction

Wednesday 9th April, 7.00pm

Venue: Lifton Strawberry Fields, Lifton, Devon PL16 ODE

KIVELLS

www.kivells.com

Land at Holemoor

Bradford, Holsworthy | Auction Guide Price £35,000 - £40,000
For sale by public auction - Wednesday 9th April



Just under 4 acres of gently sloping pasture land on the edge of a rural hamlet boasting road frontage and access and lovely countryside views.

Holsworthy Farms & Land Agency
farms@kivells.com | 01409 259547

Land at St. Erney

St. Erney, Landrake, Saltash | Auction Guide Price £65,000
For sale by public auction - Wednesday 9th April



Extending to some 6.07 acres in all, the Land at Erney comprises a single field, which is currently planted with a variety of brassicas.

Holsworthy Farms & Land Agency
farms@kivells.com | 01409 259547

Land at Land at Broad Parkham

Parkham, Bideford | Auction Guide Price £140,000 - £150,000
For sale by public auction - Wednesday 9th April



14.65 acres comprises two gently sloping pasture fields including a small area of woodland. The land benefits from parish road frontage, good access and natural and mains water.

Holsworthy Farms & Land Agency
farms@kivells.com | 01409 259547

Land at Highercliff Woods

Duloe, Liskeard | Auction Guide Price £60,000 - £70,000
For sale by public auction - Wednesday 9th April



Woodland extending to approximately 19.67 acres comprising a block of mature Beech trees supporting a wide range of flora and fauna and situated off a quiet parish road.

Liskeard Farms & Land Agency
mark.bunt@kivells.com | 01579 345543

Land at Venncott

Newton St. Petrock, Holsworthy | Auction Guide Price £60,000
For sale by public auction - Wednesday 9th April



The Land at Venncott extends to some 6.46 acres and comprises very gently sloping pasture land which is divided into two handy sized enclosures.

Holsworthy Farms & Land Agency
farms@kivells.com | 01409 259547

Plot of land beside Queensland

Trelights, Port Isaac | Auction Guide Price £50,000
For sale by public auction - Wednesday 9th April



A generous plot of agricultural land extending to circa 0.22 acres with excellent further potential to add value with a variety of uses, all subject to obtaining the necessary planning consents.

Launceston Estate Agents
launceston@kivells.com | 01566 777777

Previous Auction Results

Wednesday 12th March

KIVELLS

www.kivells.com

Land at Fiddlecott

Chawleigh, Chulmleigh | Auction Guide Price £175,000
SOLD: £256,000



Extending to some 25.46 acres comprising a useful block of gently sloping grass land with just under 8 acres of scrub and native woodland on its southern boundary.

Holsworthy Farms & Land Agency
farms@kivells.com | 01409 259547

Land at Boldventure

Germansweek, Beaworthy | Auction Guide Price £75,000 - £95,000
SOLD: £90,000



Approximately 12 acres of pastureland with excellent road access and accessible to Launceston, Okehampton, Bude and Holsworthy.

Holsworthy Estate Agents
holsworthy@kivells.com | 01409 253 888

Land at Penvith

St. Martin, Looe | Auction Guide Price £50,000 - £55,000
SOLD: £116,000



5.47 acres of pasture land in a single enclosure with parish road frontage and a timber frame and timber clad field shelter. Freehold with vacant possession upon completion.

Liskeard Farms & Land Department
mark.bunt@kivells.com | 01579 345 543

Land near St Winwolaus's Church

Tremaine, Launceston | Auction Guide Price £10,000
SOLD: £9,000



Approximately 0.24 acres of land in a rural yet convenient location suitable for a number of purposes including amenity or recreational use.

Holsworthy Farms & Land Agency
Farms@kivells.com | 01409 259547

Land at Scrubtor

Tavistock | Auction Guide Price £45,000 - £50,000
SOLD: £50,000



Approximately 3.49 acres of pasture land in a single gently sloping enclosure with parish road frontage.

Liskeard Farms & Land Agency
mark.bunt@kivells.com | 01579 345543

Farms Sale Agreed

KIVELLS

www.kivells.com

Keymelford Farm Buildings & Land Keymelford, Colebrook, Crediton, Devon



Lot 1 - Agricultural buildings and yard area with land surrounding extending to 0.41 acres.
Guide Price: £150,000

Lot 2 - Agricultural building with concrete pad and land surrounding extending to 0.41 acres.
Guide Price: £135,000

Lot 3 - A small grassland area extending to approximately 0.14 acres. **Guide Price: £25,000**

Exeter Farms & Land Agency
exeter@kivells.com | 01392 252262

Pheasantry Farm Chawleigh, Chulmleigh



Lot 1: Pheasantry Farm Bungalow, Gardens, Agricultural Buildings and approximately 5.83 acres of land.
Guide Price: £625,000

Lot 2: Agricultural Building together with approximately 5.96 acres of land.
Guide Price: £125,000

Guide Price as a Whole: £750,000

Exeter Farms & Land Department
ian.caunter@kivells.com | 01392 252 262

Farms Sale Agreed

KIVELLS

www.kivells.com

Worthen Farm Pyworthy, Holsworthy, Devon



- Grassy ring fenced stock farm with 151 acres
- South facing three bedroom period farmhouse and adjoining two bedroom cottage (suitable for holiday letting)
- Two further traditional barns with potential for conversion, subject to planning
- Range of adaptable farm buildings
- Level and gently sloping pasture land
- EPC D & D

Guide Price: £2,150,000

Holsworthy Farms & Land Department
farms@kivells.com | 01409 259547

Larrick Farm South Petherwin, Launceston

- Super reverse living barn conversion
- 4 bedrooms and 2 bathrooms
- Outbuildings for livestock or equestrian use
- 45 acres of pasture land

Guide Price: £1,000,000

Holsworthy Farms & Land Department
farms@kivells.com | 01409 259547



Land at High Ridge Farm North Tawton, Devon



A highly productive run of approx. 34 acres of level pasture land with planning permission for a 80ft x 40ft storage shed.

Guide Price £340,000

Exeter Farms & Land Department
simon.alford@kivells.com | 01392 252262



Land Forming Part Fursdon, Newtake, Foxhole, Waddons & Kingston Staverton, Totnes

For sale by private treaty as a whole or in 7 lots

A rare opportunity to purchase approximately 331.16 acres of immaculate rolling pasture land located on the northern fringes of the popular South Hams. Primarily south facing, the land is of level to sloping in topography, containing principally Grade 3 freely draining, slightly acidic loamy soils. The fields are divided into good sized, easily workable enclosures and are complete with stock proof fencing and well-maintained hedgerow boundaries.

LOT 1 : 91.73 acres of agricultural land known as Fursdown.

Guide: £825,000

LOT 2: 103.83 acres of agricultural land known as Newtake.

Guide: £865,000

LOT 2A: Newtake Paddocks totalling 4.63 acres of land.

Guide: £185,000

LOT 3: 19.96 acres of agricultural land known as Foxhole.

Guide: £200,000

LOT 4: 60.79 acres of agricultural land known as Waddons.

Guide: £550,000

LOT 5: 36.09 acres of agricultural land known as Kingston.

Guide: £325,000

LOT 6: 14.13 acres of agricultural land known as Waddons Meadow.

Guide: £145,000

Exeter Farms & Land Department
ian.caunter@kivells.com | 01392 252262



Land Sale Agreed

KIVELLS

www.kivells.com

Land at Wooldown

Marhamchurch, Bude | Guide Price £100,000



An attractive and very gently sloping pasture field extending to approx. 4.63 acres, well fenced with road frontage and good access.

Holsworthy Farms & Land Agency
Farms@kivells.com | 01409 259547

Land at Hole Farm (Lot 2)

Ashwater, Beaworthy | Guide Price £375,000



Just over 37 acres of well farmed, productive grassland. Mainly level/gently sloping and extremely well fenced. Mains and natural water supplies.

Holsworthy Farms & Land Agency
Farms@kivells.com | 01409 259547

Land at Cransworth

St. Wenn, Bodmin | Guide Price £525,000



Approx. 57 acres of productive pasture land, gently sloping and south facing with road frontage and a natural water available.

Holsworthy Farms & Land Agency
Farms@kivells.com | 01409 259547

Land at West Vognacott & Honeycroft (Lot 1)

Chilsworthy, Holsworthy | Guide Price £345,000



Just under 55 acres of pasture and amenity land in a quiet, rural setting. Further land available (lots 2 & 3).

Holsworthy Farms & Land Agency
Farms@kivells.com | 01409 259547

Land at West Vognacott & Honeycroft (Lot 2)

Chilsworthy, Holsworthy | Guide Price £200,000



Some 29 acres of pasture land in a quiet rural, yet accessible location. Further land available as Lots 1 & 3.

Holsworthy Farms & Land Agency
Farms@kivells.com | 01409 259547

Land at Myrtle Cottage Farm

Alverdiscott, Barnstaple | Offers in Excess of £425,000



A cracking run of nearly 43 acres of pasture land, level and gently sloping with road frontage and excellent access.

Holsworthy Farms & Land Agency
Farms@kivells.com | 01409 259547

Land Sale Agreed

KIVELLS

www.kivells.com

Land at Lower Rescorla Farm Rescorla, St Austell | Guide Price £100,000



Just under 4 acres of sloping amenity/pasture land on the edge of a rural hamlet. Possible development potential (STP)

Holworthy Farms & Land Agency
Farms@kivells.com | 01409 259547

Land at Southcombe Northlew, Okehampton | Guide Price £130,000



A block of approx. 19.14 acres of peacefully located pretty pasture and woodland, gently sloping and in three good sized enclosures with a natural water supply.

Holworthy Farms & Land Agency
Farms@kivells.com | 01409 259547